

KEY

- Proposed Turbine Location
- 5km Radii
- 20km Radius Study Area

Blade Tip ZTV

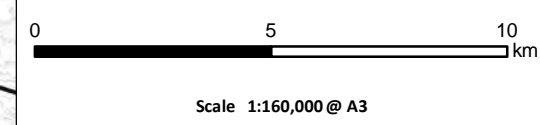
No. of Turbines Theoretically Visible

- 1 - 2
- 3 - 4
- 5 - 6
- 7 - 8
- 9

- Landscape Character Unit
- SNH Landscape Character Assessment 2019 Area

134 - Sweeping Moorland and Flows
 135 - Rounded Hills; Caithness & Sutherland
 136 - Rocky Hills and Moorland
 137 - Cnocan; Caithness & Sutherland
 138 - Lone Mountains
 139 - Rugged Mountain Massif; Caithness & Sutherland
 142 - Strath; Caithness & Sutherland
 145 - Farmed and Forested Slopes with Crofting
 328 - Rugged Mountain Massif; Ross & Cromarty
 330 - Rounded Hills and Moorland Slopes; Ross & Cromarty
 332 - High Rocky Moorland and Plateau; Ross & Cromarty
 333 - Rocky Moorland and Rugged Hills
 334 - Cnocan; Ross & Cromarty
 340 - Strath; Ross & Cromarty

Blade Tip:	149.9m	Observer height:	1.5m
DTM:	OS T5 OS T50	Surface features:	Excluded
DTM resolution:	10m	Earth curvature:	Included



Sallachy Wind Farm
 EIA Report

Figure 6.9
Landscape Character with Blade Tip ZTV
(20km Radius)

Date: 28/01/2021 Drawn by: JM Checked by: AW Version: v1

Project Number: 2864